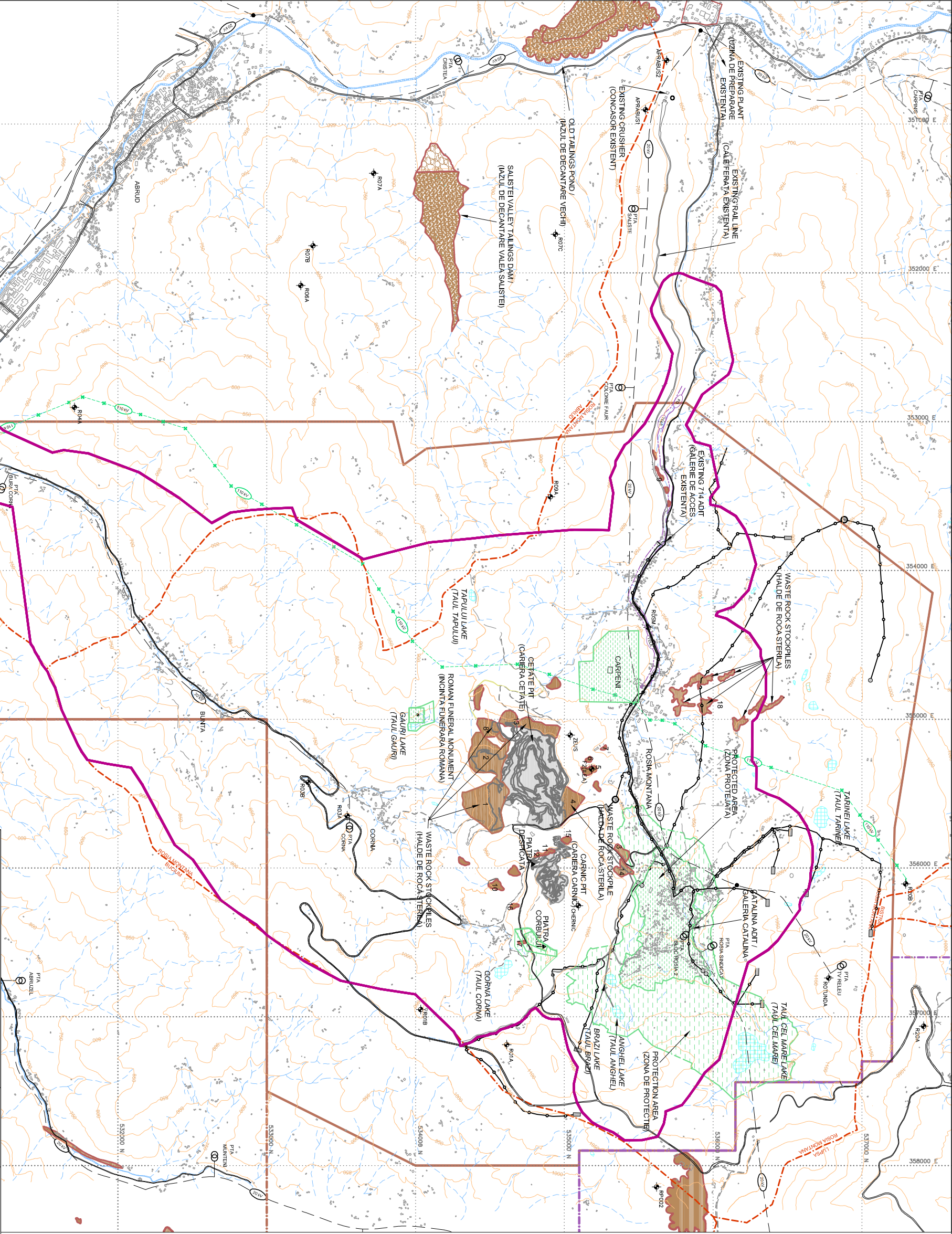




No. / Nr.	Dump / Halda	Dumped amount / Halda Suprafata	Dump Surface / Halda Suprafata
1	Valer Verde / Halda	2015.3	14.49
2	Hoop Dump / Halda Hoop	1171	16*
3	Western active / Sursolul Haldei	3186	30.5
4	Western Dump / Halda Vekes	53.882	0.5
5	Eastern Dump / Halda Balos	26.85	0.23
6	Juliana Dump / Halda Iuliana	19.382	0.33
7	Alina Dump / Halda Alina	21.548	0.13
8	Gauri Dump / Halda Gauri	13.6	0.2
9	23 August / Dump / Halda	69447	1.3
10	Eastern Dump / Halda Balos	26.85	0.23
11	Juliana Dump / Halda Iuliana	19.382	0.33
12	Alina Dump / Halda Alina	21.548	0.13
13	Gauri Dump / Halda Gauri	13.6	0.2
14	23 August / Dump / Halda	69447	1.3
15	Western active / Sursolul Haldei	3186	30.5
16	Western Dump / Halda Vekes	53.882	0.5
17	Eastern Dump / Halda Balos	26.85	0.23
18	Juliana Dump / Halda Iuliana	19.382	0.33
19	Alina Dump / Halda Alina	21.548	0.13
20	Gauri Dump / Halda Gauri	13.6	0.2
21	23 August / Dump / Halda	69447	1.3
22	Western active / Sursolul Haldei	3186	30.5
23	Western Dump / Halda Vekes	53.882	0.5
24	Eastern Dump / Halda Balos	26.85	0.23
25	Juliana Dump / Halda Iuliana	19.382	0.33
26	Alina Dump / Halda Alina	21.548	0.13
27	Gauri Dump / Halda Gauri	13.6	0.2
28	23 August / Dump / Halda	69447	1.3
29	Western active / Sursolul Haldei	3186	30.5
30	Western Dump / Halda Vekes	53.882	0.5
31	Eastern Dump / Halda Balos	26.85	0.23
32	Juliana Dump / Halda Iuliana	19.382	0.33
33	Alina Dump / Halda Alina	21.548	0.13
34	Gauri Dump / Halda Gauri	13.6	0.2
35	23 August / Dump / Halda	69447	1.3
36	Western active / Sursolul Haldei	3186	30.5
37	Western Dump / Halda Vekes	53.882	0.5
38	Eastern Dump / Halda Balos	26.85	0.23
39	Juliana Dump / Halda Iuliana	19.382	0.33
40	Alina Dump / Halda Alina	21.548	0.13
41	Gauri Dump / Halda Gauri	13.6	0.2
42	23 August / Dump / Halda	69447	1.3
43	Western active / Sursolul Haldei	3186	30.5
44	Western Dump / Halda Vekes	53.882	0.5
45	Eastern Dump / Halda Balos	26.85	0.23
46	Juliana Dump / Halda Iuliana	19.382	0.33
47	Alina Dump / Halda Alina	21.548	0.13
48	Gauri Dump / Halda Gauri	13.6	0.2
49	23 August / Dump / Halda	69447	1.3
50	Western active / Sursolul Haldei	3186	30.5
51	Western Dump / Halda Vekes	53.882	0.5
52	Eastern Dump / Halda Balos	26.85	0.23
53	Juliana Dump / Halda Iuliana	19.382	0.33
54	Alina Dump / Halda Alina	21.548	0.13
55	Gauri Dump / Halda Gauri	13.6	0.2
56	23 August / Dump / Halda	69447	1.3
57	Western active / Sursolul Haldei	3186	30.5
58	Western Dump / Halda Vekes	53.882	0.5
59	Eastern Dump / Halda Balos	26.85	0.23
60	Juliana Dump / Halda Iuliana	19.382	0.33
61	Alina Dump / Halda Alina	21.548	0.13
62	Gauri Dump / Halda Gauri	13.6	0.2
63	23 August / Dump / Halda	69447	1.3
64	Western active / Sursolul Haldei	3186	30.5
65	Western Dump / Halda Vekes	53.882	0.5
66	Eastern Dump / Halda Balos	26.85	0.23
67	Juliana Dump / Halda Iuliana	19.382	0.33
68	Alina Dump / Halda Alina	21.548	0.13
69	Gauri Dump / Halda Gauri	13.6	0.2
70	23 August / Dump / Halda	69447	1.3
71	Western active / Sursolul Haldei	3186	30.5
72	Western Dump / Halda Vekes	53.882	0.5
73	Eastern Dump / Halda Balos	26.85	0.23
74	Juliana Dump / Halda Iuliana	19.382	0.33
75	Alina Dump / Halda Alina	21.548	0.13
76	Gauri Dump / Halda Gauri	13.6	0.2
77	23 August / Dump / Halda	69447	1.3
78	Western active / Sursolul Haldei	3186	30.5
79	Western Dump / Halda Vekes	53.882	0.5
80	Eastern Dump / Halda Balos	26.85	0.23
81	Juliana Dump / Halda Iuliana	19.382	0.33
82	Alina Dump / Halda Alina	21.548	0.13
83	Gauri Dump / Halda Gauri	13.6	0.2
84	23 August / Dump / Halda	69447	1.3
85	Western active / Sursolul Haldei	3186	30.5
86	Western Dump / Halda Vekes	53.882	0.5
87	Eastern Dump / Halda Balos	26.85	0.23
88	Juliana Dump / Halda Iuliana	19.382	0.33
89	Alina Dump / Halda Alina	21.548	0.13
90	Gauri Dump / Halda Gauri	13.6	0.2
91	23 August / Dump / Halda	69447	1.3
92	Western active / Sursolul Haldei	3186	30.5
93	Western Dump / Halda Vekes	53.882	0.5
94	Eastern Dump / Halda Balos	26.85	0.23
95	Juliana Dump / Halda Iuliana	19.382	0.33
96	Alina Dump / Halda Alina	21.548	0.13
97	Gauri Dump / Halda Gauri	13.6	0.2
98	23 August / Dump / Halda	69447	1.3
99	Western active / Sursolul Haldei	3186	30.5
100	Western Dump / Halda Vekes	53.882	0.5



EIA INDEPENDENT TEAM / ECHIPA INDEPENDENTA DE EVALUARE A IMPACTULUI ASUPRA MEDIULUI		Owner / Beneficiar: S.C. ROSIA MONTANA GOLD CORPORATION S.A.		Exhibit / Plansa 4.1.4	
Independent consultant / consultant Independent		Documentation / Documentatie: ENVIRONMENTAL IMPACT ASSESSMENT REPORT / RAPORT DE EVALUARE A IMPACTULUI ASUPRA MEDIULUI		Title / Denumire Plan:	
Elaborated by / Elaborat de		GABRIEL ROSIA MONTANA		Chapter / Capita 4 : POTENTIAL IMPACT/ IMPACT POTENTIAL	
Independent consultant / consultant Independent		Note / Nota: information provided by FMGC /datele au fost puse la dispozitie de beneficiar		Scale / Scaras: 1:25000	
ECOIND. WISUTEC		Scale / Scaras: 1:25000		Date / Data: March / Martie 2006	
AMEC		Title / Denumire Plan:		EXISTING WASTE ROCK STOCKPILES / HALDE DE STERIL EXISTENTE	