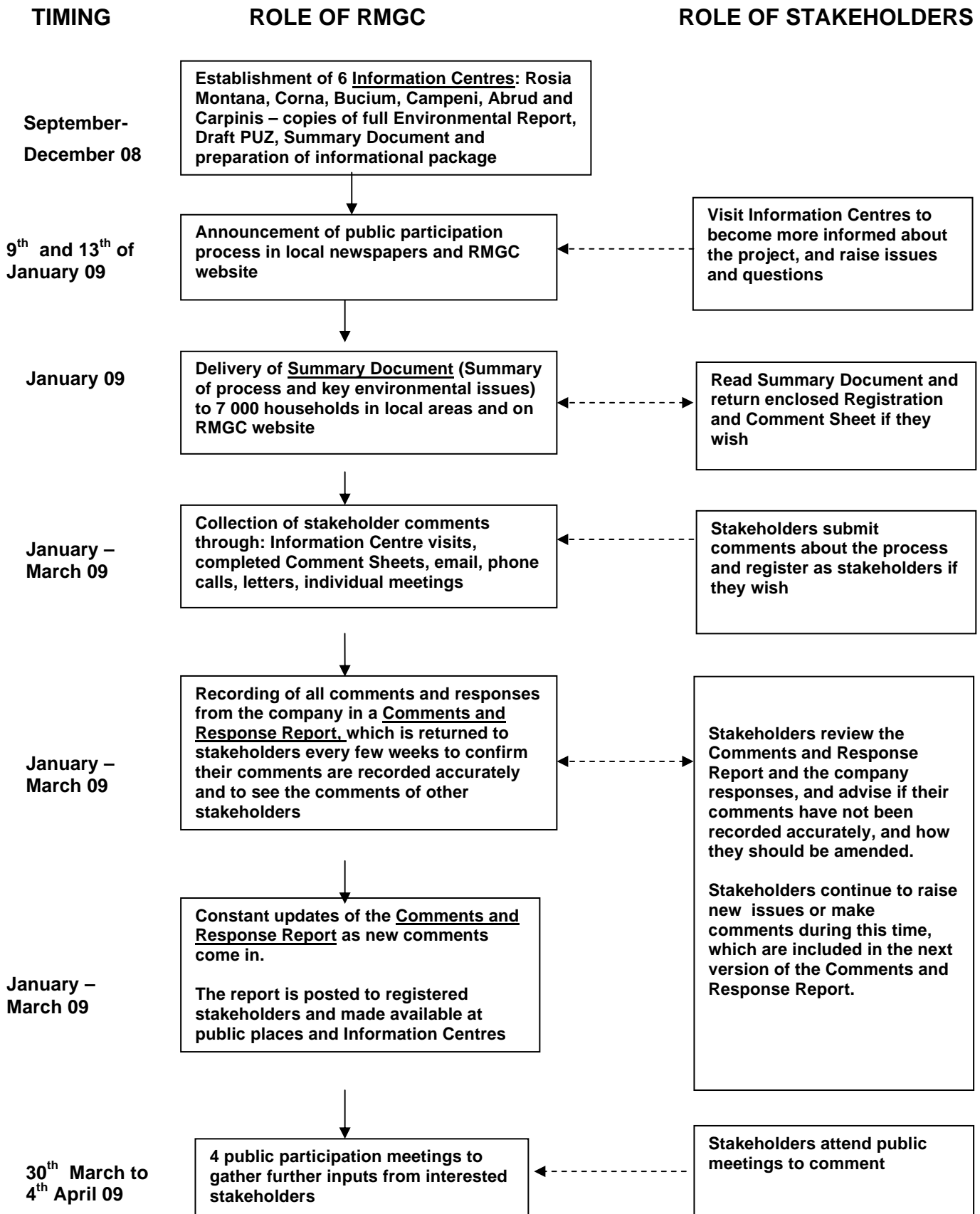


OVERVIEW OF THE PUBLIC PARTICIPATION PROCESS FOR THE STRATEGIC ENVIRONMENTAL ASSESSMENT OF THE RMP INDUSTRIAL AREA



Comments raised at the public meetings will be recorded by the decision-making authority (regional EPA), compiled and then returned to RMGC for responses. These comments and responses will be issued by the regional EPA directly to stakeholders.